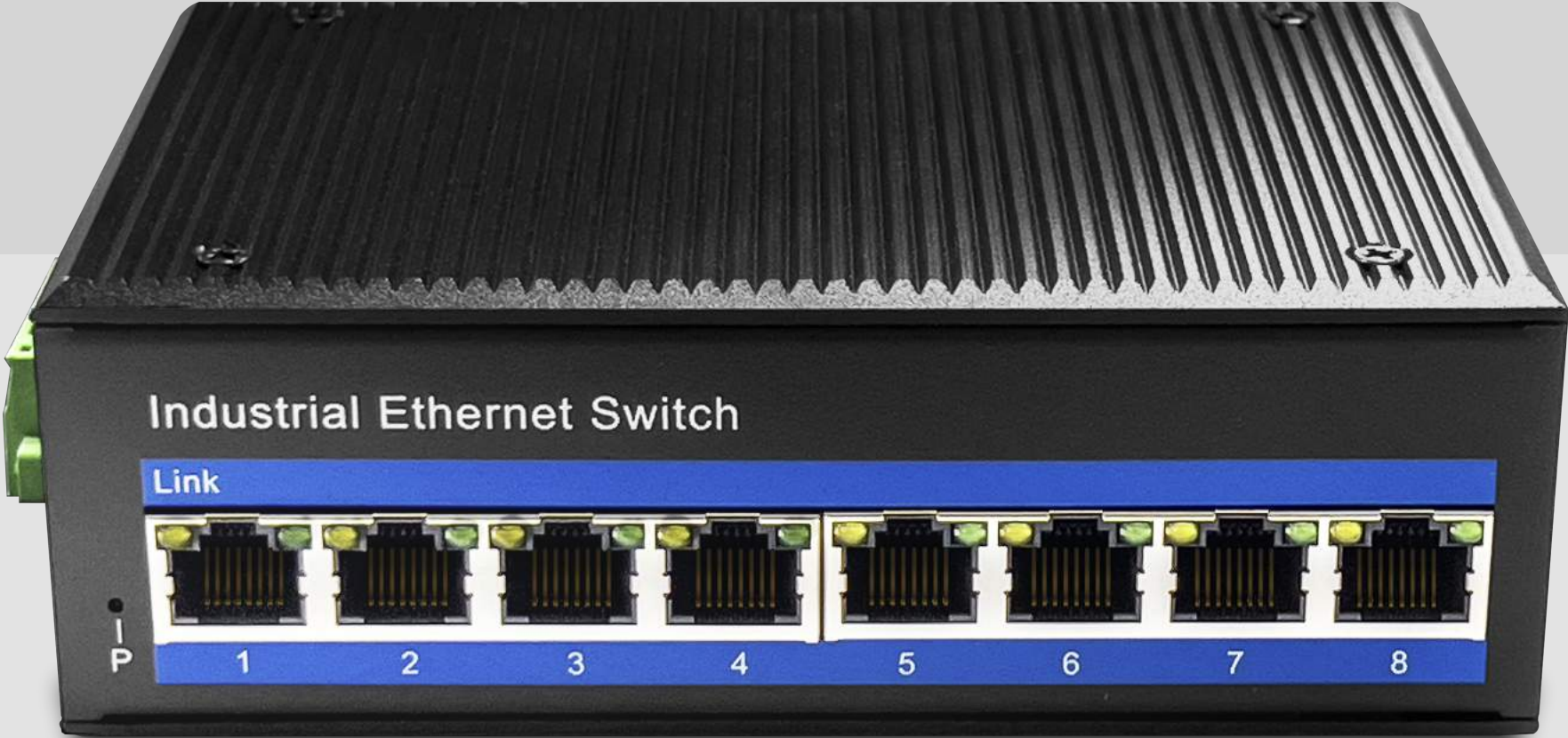




Model

# IG 1008P

8-Port Gigabit Industrial  
POE+ Switch



Datasheet



## Description

Industrial PoE switch, 8 Port 10/100/1000Mbps PoE ports, for connecting with devices like computer, switch, hub, server, etc, as well as powering network camera, industrial VoIP phone, wireless AP and other PoE supported devices. Specially designed for harsh outdoor applications. Its 6KV network port surge protection can adapt to harsh outdoor environment and ensure the reliability of the uninterrupted PoE system. Power input also chooses industry-standard types of power.

## Features

- 8-port 10/100/1000Base-Tx RJ-45 with auto negotiation and auto-MDI/MDI-X function
- 8-Port PoE, 802.3at/af support, 30W max. each port
- 48V to 57V DC, redundant power input
- -40°C to 85°C operating temperature
- IP40 aluminum housing
- Supports 6KV DC Ethernet ESD protection
- Supports 6KV DC EFT protection for power line
- Free Fall, Shock and Vibration Stability
- DIN-rail and wall-mountable hardware design

## Specifications

Model No.	IG1008P
10/100/1000BASE-TX Port	8 Port RJ-45 auto-MDI / MDI-X
PoE Specification	PoE Standard: IEEE802.3af/ IEEE802.3at PoE ports:1-8 port support PoE Power Output: Max. 15.4 watts (IEEE 802.3af) Max. 30 watts (IEEE 802.3at) PoE port Auto detect AF/AT devices Output Voltage: DC48V Power Pin Assignment:1/2+;3/6- Power Type: End-span( Mid-span optional)
Performance Specification	Bandwidth: 20Gbps Packet Buffer Memory:2Mbit Packet Forwarding Rate:15Mpps MAC Address Table: 8K
Installation	DIN rail
Maximum Frame Size	9000bytes packet size
Flow Control	Back pressure for half duplex, IEEE 802.3x pause frame for full duplex
Enclosure	IP40 aluminum housing
LED Indicator	Power: Red Ethernet: Yellow POE: Green
Power Input	48 to 57V DC
Power Consumption	3 watts
Surge protection	±4KV

# Dimensions

Network Protocols	IEEE802.3 10BASE-T; IEEE802.3i 10Base-T; IEEE802.3u;100Base-TX/FX; IEEE802.3ab 1000Base-T; IEEE802.3z 1000Base-X; IEEE802.3x;
Network cables	10BASE-T: Cat3,4,5 UTP(≤100 meter) 100BASE-TX: Cat5 or later UTP(≤10meter) 1000BASE-TX: Cat6 or later UTP(≤100 meter)
MTBF	>300,000hours
Dimensions (W x D x H)	143.7 x 103 x 47.7 mm
Weight	Product Weight: 0.36KG Packing Weight: 0.46KG
Working Environment	Working temperature: -40~85°C ; Storage temperature: -40~85°C Relative Humidity: 5%~95 %( no condensation)

