

## DS-KABD8003-RS3 Protective Shield



- Convenient design available for the 3 module surface mounting of the modular door station (DS-KD8003-IME1 or DS-KD8003-IME2)
- Material: SECC

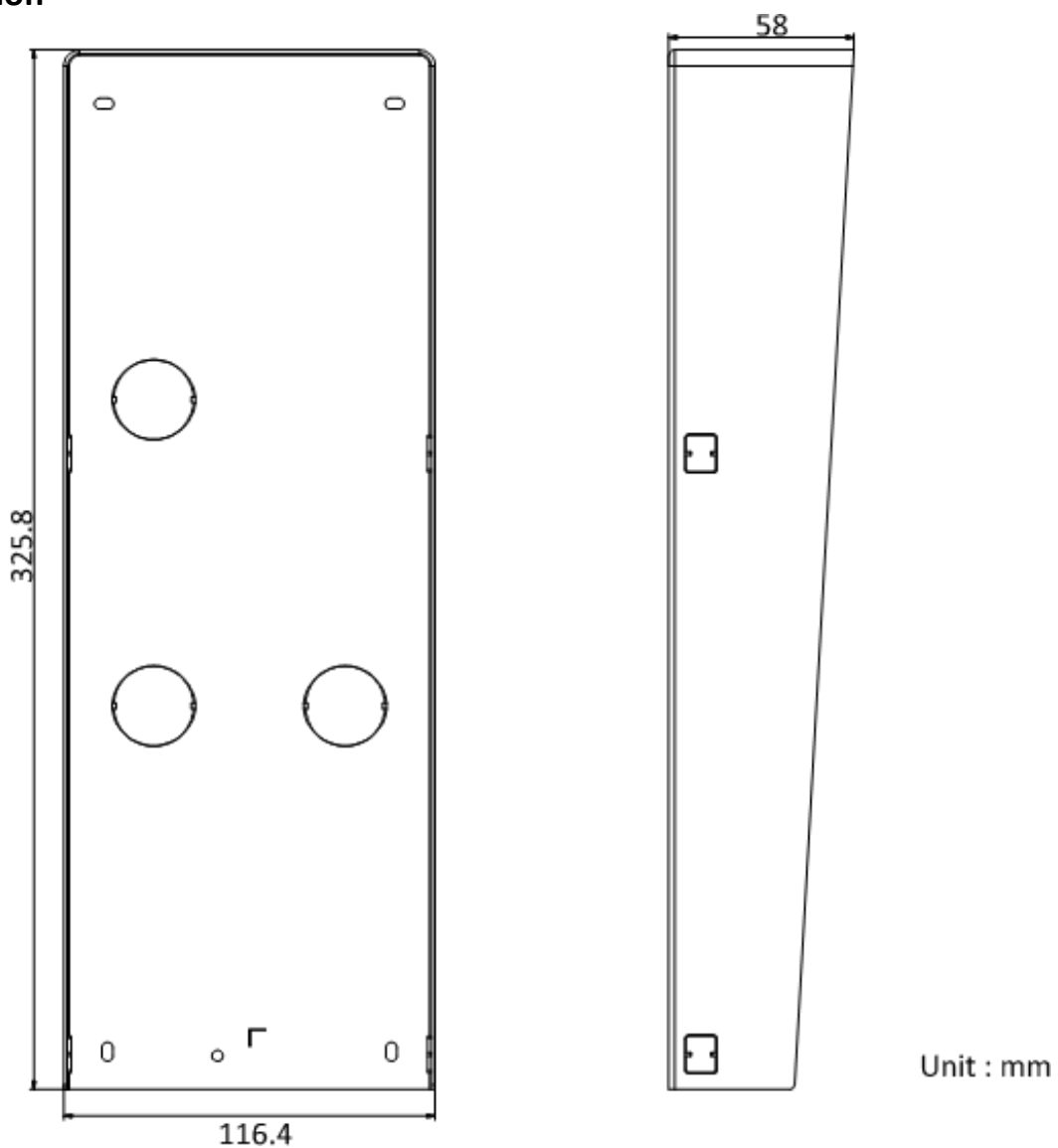
▪ **Specification**

General	
Working temperature	-40 °C to 60 °C (-40 °F to 140 °F)
Weight	Net weight: 0.705 kg
	Gross weight: 1.122 kg
Working temperature	-40 °C to 60 °C (-40 °F to 140 °F)
Working humidity	10% to 95% (No condensing)
Dimension (W × H × D)	325.8 mm × 116.4 mm × 58 mm (12.83" × 4.58" × 2.28")
Material	SECC

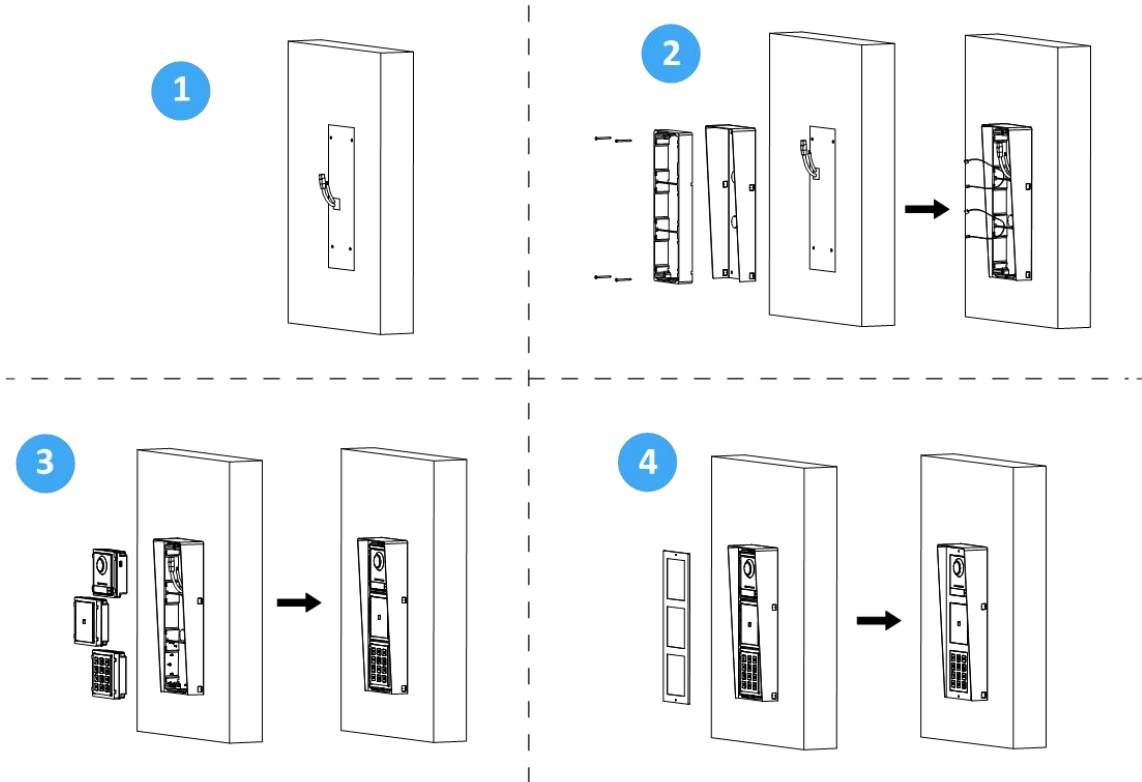
▪ **Available Model**

DS-KABD8003-RS3

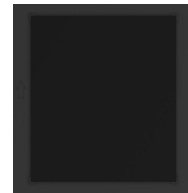
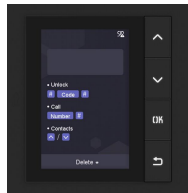
▪ **Dimension**



Unit : mm



▪ Accessory



DS-KD8003Y-IME2/S

DS-KD-DIS

DS-KD8003-IME1#  
EU

DS-KD8003-IME1/S

DS-KD-BK

DS-KD8003-IME2/S



DS-KD-KP/S

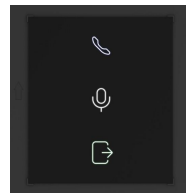
DS-KD-ACW3

DS-KD8003-IME1(  
B)/S

DS-KD8003-IME2

DS-KD8003Y-IME2/N  
S

DS-KD8003-IME1



DS-KD-ACW3#EU

DS-KD8003-IME1(B)/NS

DS-KD-ACW3/S

DS-KD-IN

DS-KD-KK/S

DS-KD-KP



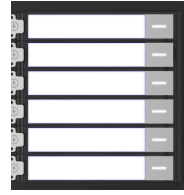
DS-KD-PMR



DS-KD8003-IME1/NS



DS-KD8003-IME1(B)/Surface



DS-KD-KK



DS-KD-KP#EU



DS-KD8003Y-IME2



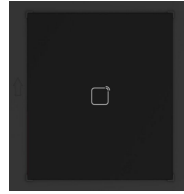
DS-KD8003-IME2/NS



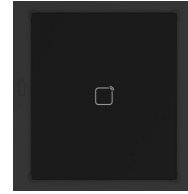
DS-KD-INFO



DS-KD8003-IME1(B)



DS-KD-M



DS-KD-E

**Headquarters**

No.555 Qianmo Road, Binjiang District,  
Hangzhou 310051, China  
T +86-571-8807-5998  
www.hikvision.com



Follow us on social media to get the latest product and solution information.

